



HIGHWAY IMPROVEMENT PROJECT

WHEN and WHAT

Estimated Project Construction Duration:

April 2024 through June 2024

- A Public Information Meeting is scheduled for **Wednesday, March 27, 2024, from 5 to 7 p.m. at the Somers Town/Village Hall, 7511 12th Street, Somers, WI 53144**
- Handouts will be available, and exhibits will be on display.
- Project staff will be available to answer questions.

PROJECT DETAILS:

- Mill and overlay of existing asphalt pavement.
- Beam guard upgrades.
- Roadway culvert replacement.

If you have any questions about the project during construction, you may contact Project Manager Kwame Amegashitsi by phone at (262) 653-1888, or by email at Kwame.Amegashitsi@kenoshacounty.org

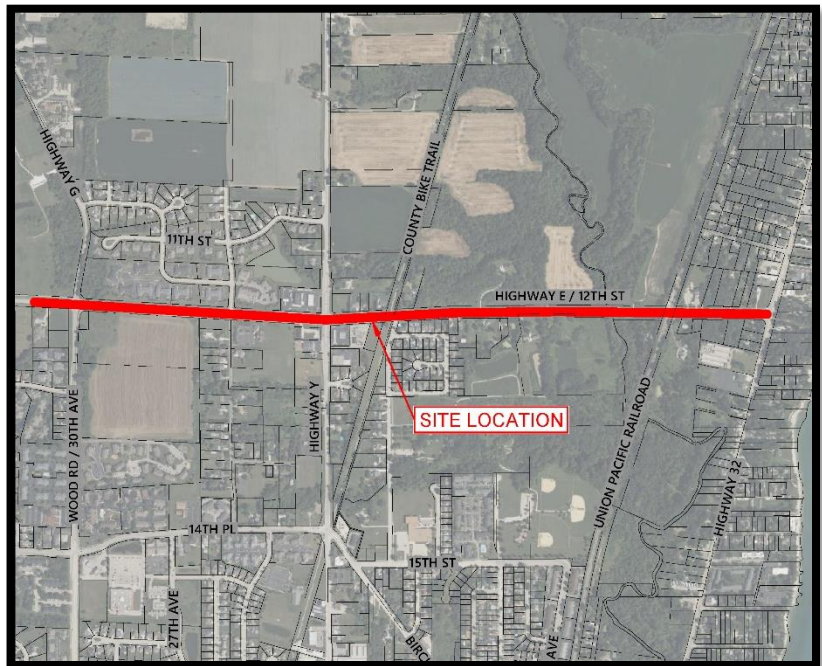
CONSTRUCTION NOTICE

Highway E Mill and Overlay:
Highway G to Highway 32

PROJECT INFORMATION

Kenosha County will be resurfacing approximately 1.4 miles of Highway E in the Village/Town of Somers this spring/summer.

Deteriorated roadway culverts along Highway E will be replaced as will damaged or aging beam guard. Curb will also be replaced in spot locations where required. Highway E will be open to through traffic during the majority of the project, utilizing flagging operations as needed. Up to a two-week full closure of Highway E may be required to complete culvert replacement work.



The project team thanks you for your patience and cooperation throughout this project!



Find us on Facebook at:
[Kenosha County Government](https://www.facebook.com/KenoshaCountyGovernment)



Find us online at:
www.kenoshacounty.org/highways

County Project Contact:

Kwame Amegashitsi
Civil Engineer
Phone (262) 653-1888
Kwame.Amegashitsi@kenoshacounty.org

