



HIGHWAY IMPROVEMENT PROJECT

WHEN and WHAT

Estimated Project Construction Duration: May 2024 through July 2024

- A Public Information Meeting is scheduled for **Thursday, November 16, 2023, from 5 to 7 p.m.** at the Somers Town/Village Hall, 7511 12th Street, Somers, WI 53144
- A brief presentation will take place from 5:15 to 5:30 p.m.

PROJECT DETAILS:

- Mill and overlay of existing asphalt pavement on Highway E and Highway Y.
- Beam Guard upgrades on Highway E.
- Roadway Culvert Replacement on Highway E.

If you have any questions about the project during construction, you may contact Project Manager Kwame Amegashitsi by phone at (262) 653-1888, or by email at Kwame.Amegashitsi@kenoshacounty.org

CONSTRUCTION NOTICE

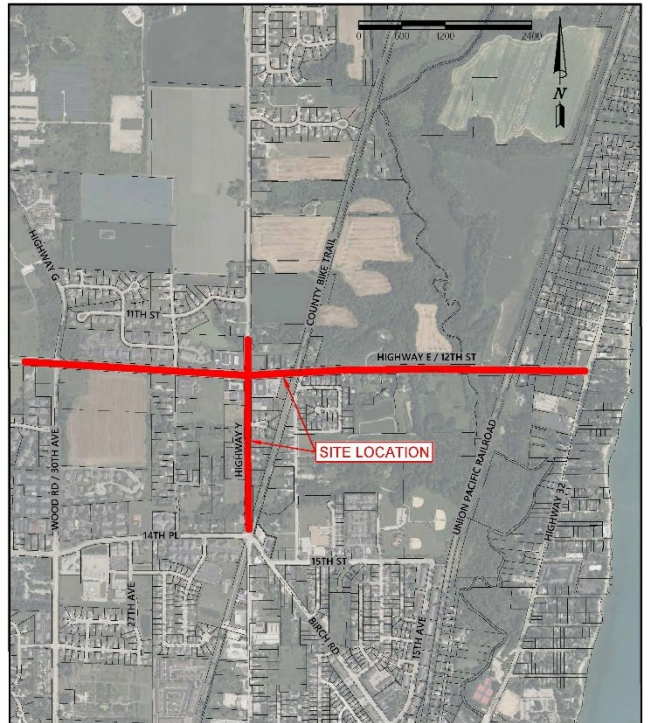
Highway E and Y Improvements: Highway G to Highway 32 and 14th Place to Highway E

PROJECT INFORMATION

Kenosha County will be resurfacing approximately 1.4 miles of Highway E and approximately 0.45 miles of Highway Y in the City of Kenosha and the Village/Town of Somers in summer of 2024.

Deteriorated roadway culverts along Highway E will be replaced as well as beam guard. Curb will be replaced in spot locations as needed.

Highways E and Y will be open to through traffic during the majority of the project, with flagging operations as needed. Short-term closures may be required for culvert work.



Project Location Map
HIGHWAY E & Y Resurfacing
HIGHWAY E: HIGHWAY G to HIGHWAY 32
HIGHWAY Y: 14th Place to HIGHWAY E
Kenosha County, Wisconsin



The project team thanks you for your patience and cooperation throughout this project!



Find us on Facebook at: [Kenosha County Government](https://www.facebook.com/KenoshaCountyGovernment)



Find us online at: www.kenoshacounty.org/highways

County Project Contact:

Kwame Amegashitsi
Civil Engineer
Phone (262) 653-1888
Kwame.Amegashitsi@kenoshacounty.org

