



BELLI & BELL ARCHITECTS
39 S MILWAUKEE AVENUE WHEELING IL 60090

PROJECT

DRY HYDRANT
NEWPORT TOWNSHIP FIRE DEPT.
WADSWORTH, ILLINOIS

JOB NO.

DATE

06/20/2001

SHEET NO.

A1.1
1 OF 2

DRAFTING TUBE ALLOWABLE PIPE SIZES :

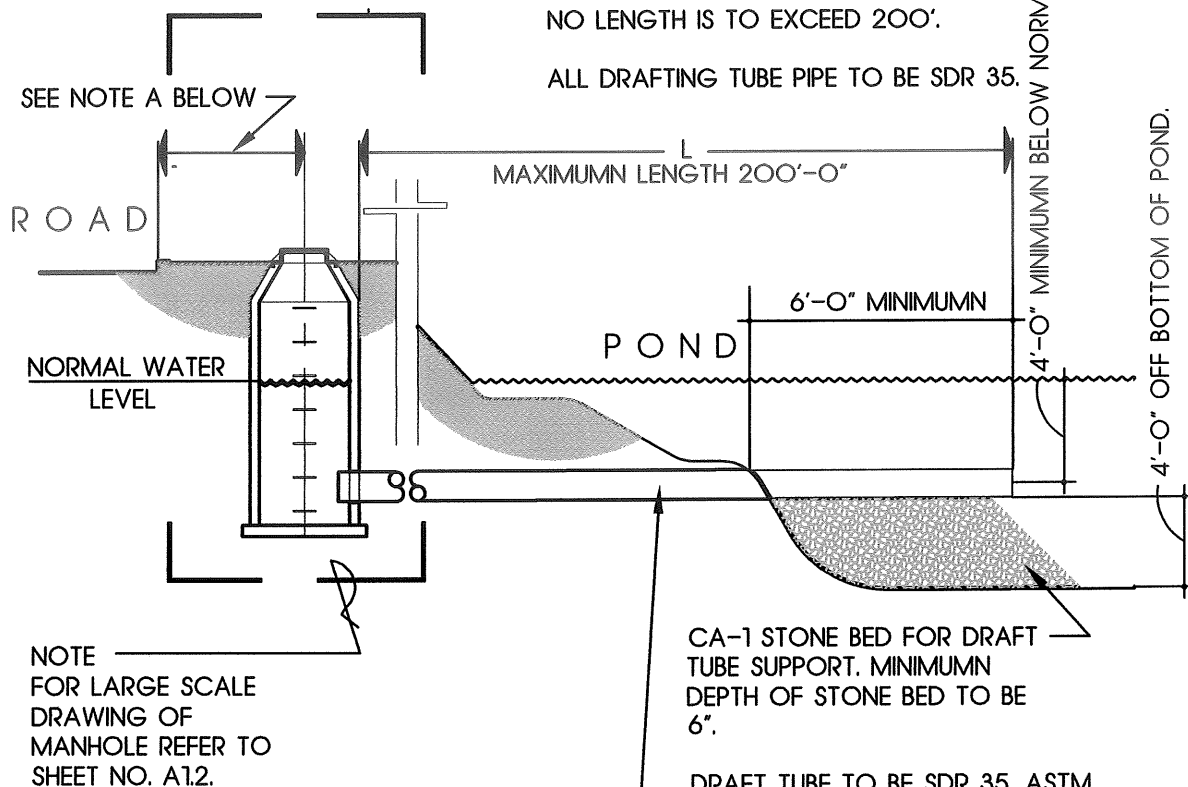
L = 25' OR LESS PIPE DIAM. 15" I.D.

L = 25' TO 50' PIPE DIAM. = 21" I.D.

L = OVER 50' PIPE DIAM. = 24" I.D.

NO LENGTH IS TO EXCEED 200'.

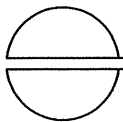
ALL DRAFTING TUBE PIPE TO BE SDR 35.



precast dry hydrant manhole

detail

1



SCALE

1/8"

=

1' - 0"

NOTE A

MANHOLE SHALL BE LOCATED NOT MORE THAN TEN (10') FEET FROM EDGE OF PAVEMENT NOR LESS THAN SIX (6') FEET. THE TOP OF THE MANHOLE FRAME SHALL BE NOT MORE THAN SIX (6") INCHES BELOW THE CENTERLINE OF THE ROAD ELEVATION.



BELLI & BELL ARCHITECTS
39 S MILWAUKEE AVENUE WHEELING IL 60090

PROJECT

DRY HYDRANT
NEWPORT TOWNSHIP FIRE DEPT.
WADSWORTH, ILLINOIS

JOB NO.

DATE

06/20/2001

SHEET NO.

A1.2
2 OF 2

NOTE B

PAINT ALL FERROUS METAL WITH
ONE COAT SHOP APPLIED PRIMER
AND TWO COATS OF
"RUST-O-LEUM" HI-VIS ORANGE.

"NEENAH PERMA GRIP" LID

SEE NOTE A BELOW

"NEENAH R-1772" FRAME
BOLTED TO MANHOLE PER
MANUFACTURER'S
RECOMMENDATIONS.

ROAD

NORMAL WATER LEVEL

CAST IRON MANHOLE STEPS.
NEENAH FOUNDRY R 1981-J.

POND

6"

4"

4'-0"

4"

1'-0"

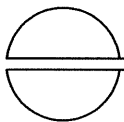
PRECAST CONCRETE
MANHOLE. CLASS "X"
CONCRETE.

REFER TO DRAWING
A1.1 FOR DRAFT
TUBE.

precast dry hydrant manhole

detail

2



SCALE

1/4"

=

1' - 0"

NOTE A

MANHOLE SHALL BE LOCATED NOT MORE THAN TEN (10') FEET
FROM EDGE OF PAVEMENT NOR LESS THAN SIX (6') FEET. THE
TOP OF THE MANHOLE FRAME SHALL BE NOT MORE THAN SIX
(6") INCHES BELOW THE CENTERLINE OF THE ROAD ELEVATION.