

## Frequently-Asked Questions

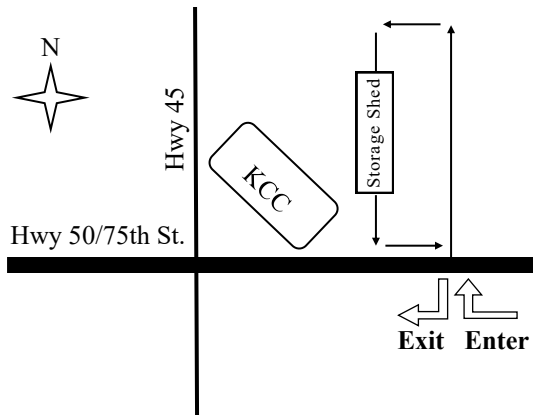
### Why can't I bring latex paint?

Latex paint is not considered to be a hazardous material. As such, it can be disposed of through paint swaps, donation or by putting it in the trash.

The recommended method for trash disposal is to put kitty litter in a box, spread the paint over the litter and allow to dry, then dispose of it with your garbage. There are also paint hardeners that can be purchased at a hardware store.

### Where is the Public Works Garage?

The driveway for the Kenosha County Public Works Garage is located on Hwy. 50 (75th St.), on the north side of the road (east of the driveway to the main entrance for the Kenosha County Center.) There will be signs on Hwy. 50 directing you.



Sponsored by:



**Samantha Kerkman**  
Kenosha County Executive



**Extension**

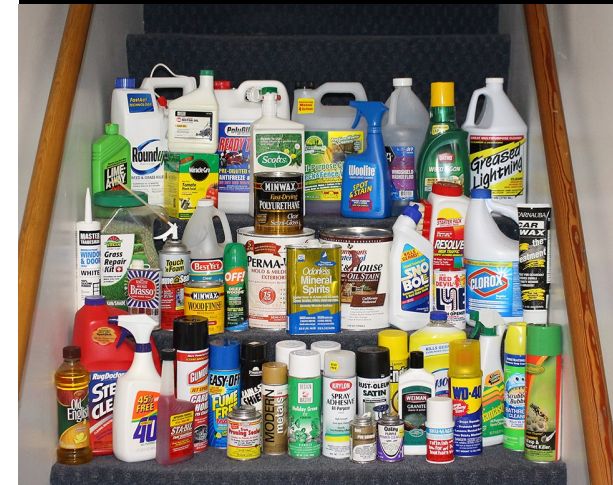
UNIVERSITY OF WISCONSIN-MADISON  
KENOSHA COUNTY

For more information, please call the Extension Kenosha County Office at **262-857-1945**.

For more information about recycling, visit the Extension Kenosha County website at <https://kenosha.extension.wisc.edu/community-development/wasteandrecycling/> or the Wisconsin Recycling Markets Directory at <https://www.uwgb.edu/solid-hazardous-waste-education-center/>.

2023

## Kenosha County Household Hazardous Waste, E-Waste & Refrigerant Collection Event



**Saturday, May 20th**  
8:00am ~ 1:00pm

**Kenosha County Center**  
Public Works Garage  
19600 75th St., Bristol, WI 53104

## What is the Household Hazardous and E-waste Recycling Event?

A once-a-year collection of household hazardous chemical wastes.

E-waste (electronics) and refrigerant wastes (household cooling appliances) are also accepted!

## Who is eligible to participate?

Any Kenosha County resident!

## What electronics are accepted?

- ◆ Computers, including laptops
- ◆ Fax machines
- ◆ Keyboards, mice, etc.
- ◆ Stereos
- ◆ TVs and VCRs
- ◆ Scanners
- ◆ iPods, DVD, CD & MP3 players
- ◆ Printers
- ◆ Phones (including cell phones)
- ◆ Power tools
- ◆ Copiers
- ◆ Toner cartridges
- ◆ Electronic toys
- ◆ Hair dryers
- ◆ Water coolers
- ◆ Refrigerators
- ◆ Vacuums
- ◆ Toasters
- ◆ Stoves
- ◆ Freezers
- ◆ Microwaves
- ◆ Dishwashers
- ◆ Washers/dryers
- ◆ Air conditioners
- ◆ Dehumidifiers
- ◆ Water heaters

**There is no fee for the collection of any hazardous waste or E-waste material.**

## What household waste can I bring?

### *Kitchen/Bathroom*

- ◆ Aerosol cans
- ◆ Bug spray
- ◆ Floor care products
- ◆ Metal or furniture polish
- ◆ Oven cleaner
- ◆ Drain cleaner
- ◆ Bathroom cleaner
- ◆ Tile cleaner
- ◆ Disinfectants
- ◆ Lithium/alkaline batteries

### *Garage/Workshop*

- ◆ Unused gasoline
- ◆ Gasoline/oil mixtures
- ◆ Brake fluid
- ◆ Auto repair products
- ◆ Transmission fluid
- ◆ Oils/cleaners
- ◆ Paint thinner
- ◆ Varnish
- ◆ Antifreeze
- ◆ Oil based paint
- ◆ Lead based paint
- ◆ Vehicle (lead) and power tool batteries

### *Garden/Hobby/Other*

- ◆ Fertilizers
- ◆ Fungicides
- ◆ Herbicides
- ◆ Rat/mouse poison
- ◆ Artists' paints
- ◆ Fiberglass epoxy
- ◆ Gun cleaning solvents
- ◆ Moth balls
- ◆ Pool chemicals
- ◆ Photography chemicals
- ◆ Fluorescent bulbs

**Do NOT BRING  
the following materials:**

**Latex paint (water-based)  
Tires**

**Infectious or biological waste  
Compressed gas cylinders  
Explosives**

**Radioactive waste  
Medical and pharmaceutical waste  
Commercial or business waste**

**These materials will NOT be accepted.**

## How should I handle and transport the hazardous waste?

Keep products in original containers.

Seal containers tightly to avoid leaking. Place it in a leak-proof container.

Do not mix products together.

Pack containers in sturdy boxes in the trunk or in the rear of your vehicle.

Store products away from kids, pets and fire.

