



COUNTY HIGHWAY S EAST FRONTAGE ROAD TO WIS 31

Project Update

October 5, 2020



Kenosha County is currently underway with reconstructing County Highway S from the Interstate 94 East Frontage Road to WIS 31, with scheduled completion in 2021.

Please note that all work is weather dependent and subject to change

UPCOMING CLOSURES

Thursday, October 8:

- The intersection of WIS 31 and County Highway S is scheduled to close to traffic overnight from 9 p.m. to 5:30 a.m. for paving operations in the intersection.

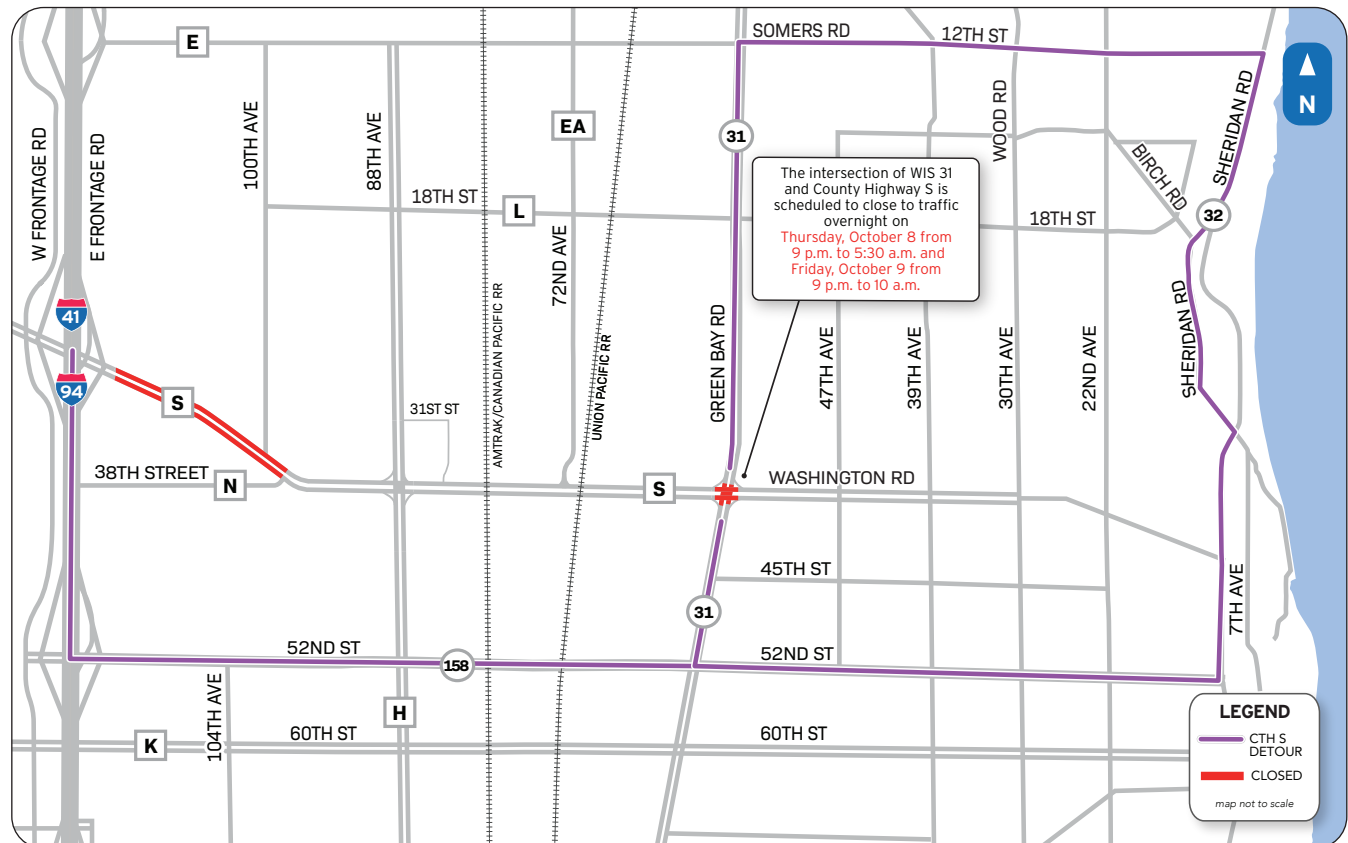
Friday, October 9:

- The intersection of WIS 31 and County Highway S is scheduled to close to traffic overnight from 9 p.m. to 10 a.m. for paving operations in the intersection.

Detour Route:

- Motorists are encouraged to utilize WIS 31 (Green Bay Road), WIS 158 (52nd Street), WIS 32 (Sheridan Road), and County Highway E (12th Street) to get around the closure.

The project team thanks you for your patience and cooperation throughout this project!



Find us on Facebook at:
Kenosha County
Government



Find us online at:
Kenosha County Highways

Project Contact: Rachel Andreoli
Public Involvement Lead
Cell: (262) 977-0234
Email: Rachel@devopr.com

