



MAP 5

EXISTING & PROPOSED TRAILS

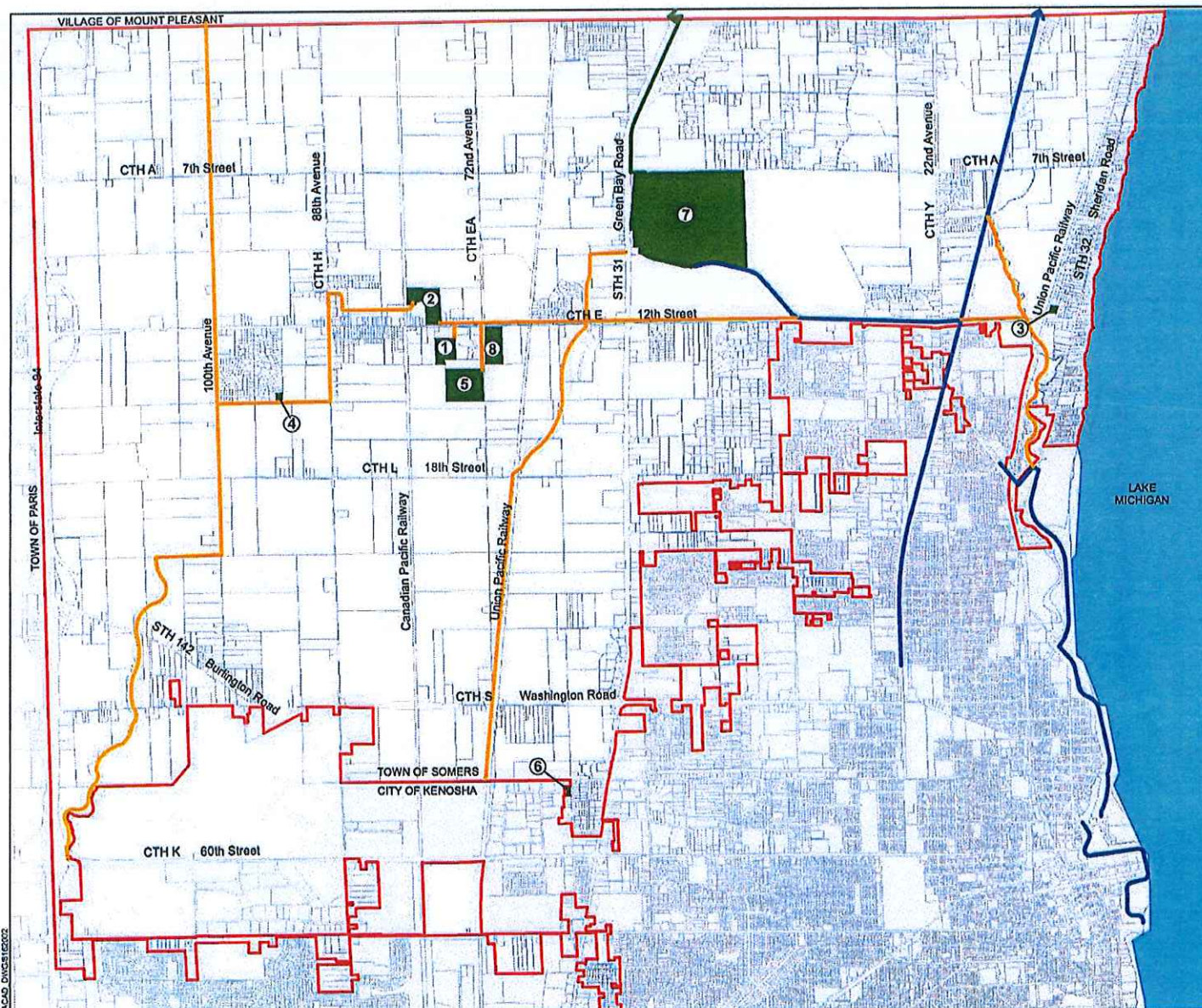
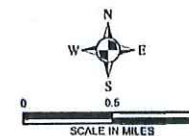
TOWN OF SOMERS
KENOSHA COUNTY, WISCONSIN

LEGEND

- TOWN LIMITS
- EXISTING BIKE TRAIL
- PROPOSED BIKE TRAIL
- PROPOSED MULTI-USE TRAIL

PUBLIC PARK SITES

- ① 14.00 ACRES BEHIND TOWN HALL
- ② 24.20 ACRES NORTH OF TOWN HALL
- ③ 1.70 ACRE FABIANO PARK
- ④ 2.00 ACRES IN COUNTRY CHARM SUBDIVISION
- ⑤ 34.70 ACRES ON HWY "EA"
- ⑥ 1.65 ACRES IN VALLEY VIEW SUBDIVISION
- ⑦ PETRIFYING SPRINGS COUNTY PARK
- ⑧ SOMERS ELEMENTARY SCHOOL



DATE: SEPTEMBER 2009



JACOBI DWG1512002

SOURCE: KENOSHA COUNTY, RUEKERT-MIELKE