

MAP 1
EXISTING & PROPOSED
PUBLIC PARK SITES
TOWN OF SOMERS
KENOSHA COUNTY, WISCONSIN

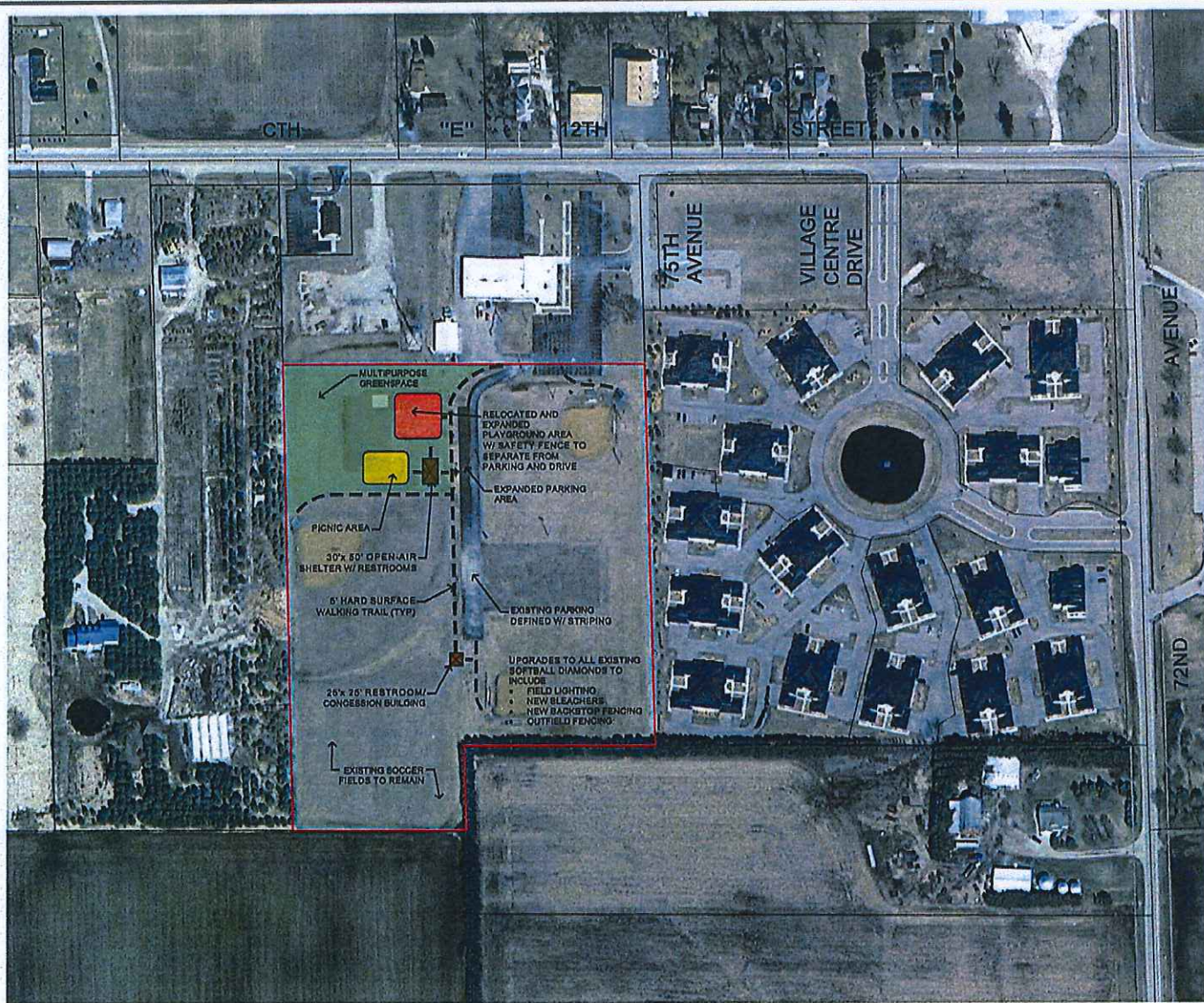
Legend

- TOWN LIMITS
- PUBLIC PARK SITES**
- ① 14.00 ACRES BEHIND TOWN HALL
- ② 24.20 ACRES NORTH OF TOWN HALL
- ③ 1.70 ACRE FABIANO PARK
- ④ 2.00 ACRES IN COUNTRY CHARM SUBDIVISION
- ⑤ 34.70 ACRES ON HWY "EA"
- ⑥ 1.65 ACRES IN VALLEY VIEW SUBDIVISION
- ⑦ PETRIFYING SPRINGS COUNTY PARK
- ⑧ SOMERS ELEMENTARY SCHOOL



DATE: SEPTEMBER 2009
Ruekert-Mielke
engineering solutions for a working world

RM11712L



**14.00-ACRE PARK CONCEPT PLAN
TOWN HALL SITE**

TOWN OF SOMERS
KENOSHA COUNTY, WISCONSIN

LEGEND

— PROPERTY BOUNDARY



DATE: OCTOBER, 2009

© 2009 Copyright Ruekert & Mielke, Inc.

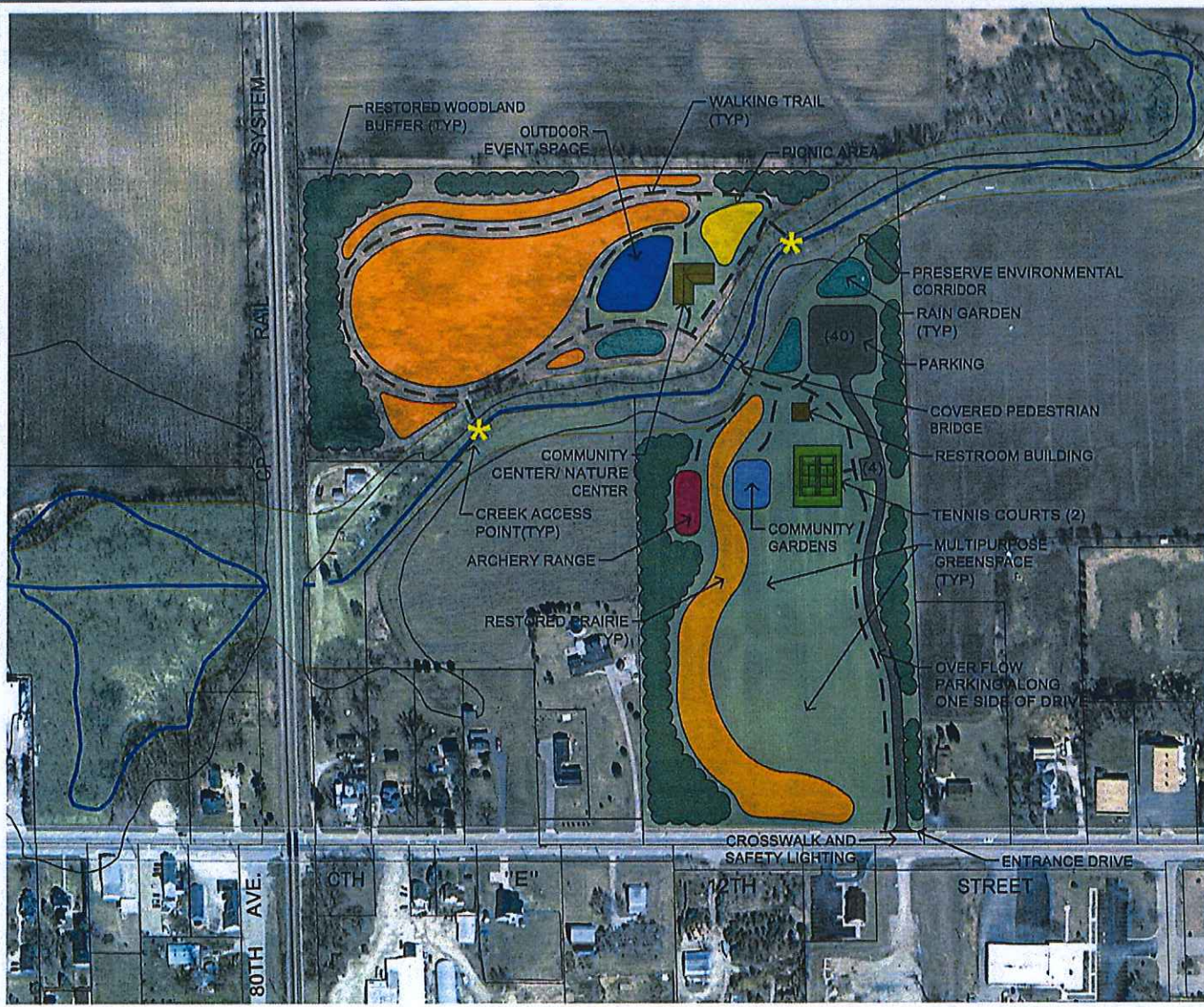


04/19/2009 1:31pm PLOTTED BY: COLLEENOWSKI
 MAPS: N:\Aerial\Aerial\020909\09_01_02_0221.mxd, C:\2_0221.mxd, G:\Aerial\Aerial\020909\09_01_02_0221.mxd
 REFERENCE: G:\Aerial\Aerial\020909\09_01_02_0221.mxd

SOURCE: RUEKERT-MIELKE
 BASEMAP SOURCE: KENOSHA COUNTY PLANNING AND DEVELOPMENT

04-15-2009 1:37pm PLOTTED BY: CULDSOBYG SAVED BY: CULDSOBYG
W:\2009\10000\Gensler\24.20 Acre Park Concept Plan.dwg Layer: 0
MAPED: 04/15/2009 1:37pm User: M. M. Mielke
W:\2009\10000\Gensler\24.20 Acre Park Concept Plan.dwg Layer: 0
MAPED: 04/15/2009 1:37pm User: M. M. Mielke
W:\2009\10000\Gensler\24.20 Acre Park Concept Plan.dwg Layer: 0
MAPED: 04/15/2009 1:37pm User: M. M. Mielke

RN1115L8



24.20-ACRE PARK CONCEPT PLAN GITZLAFF SITE NORTH OF TOWN HALL

TOWN OF SOMERS
KENOSHA COUNTY, WISCONSIN

LEGEND

- PROPERTY BOUNDARY
- PIKE RIVER TRIBUTARY



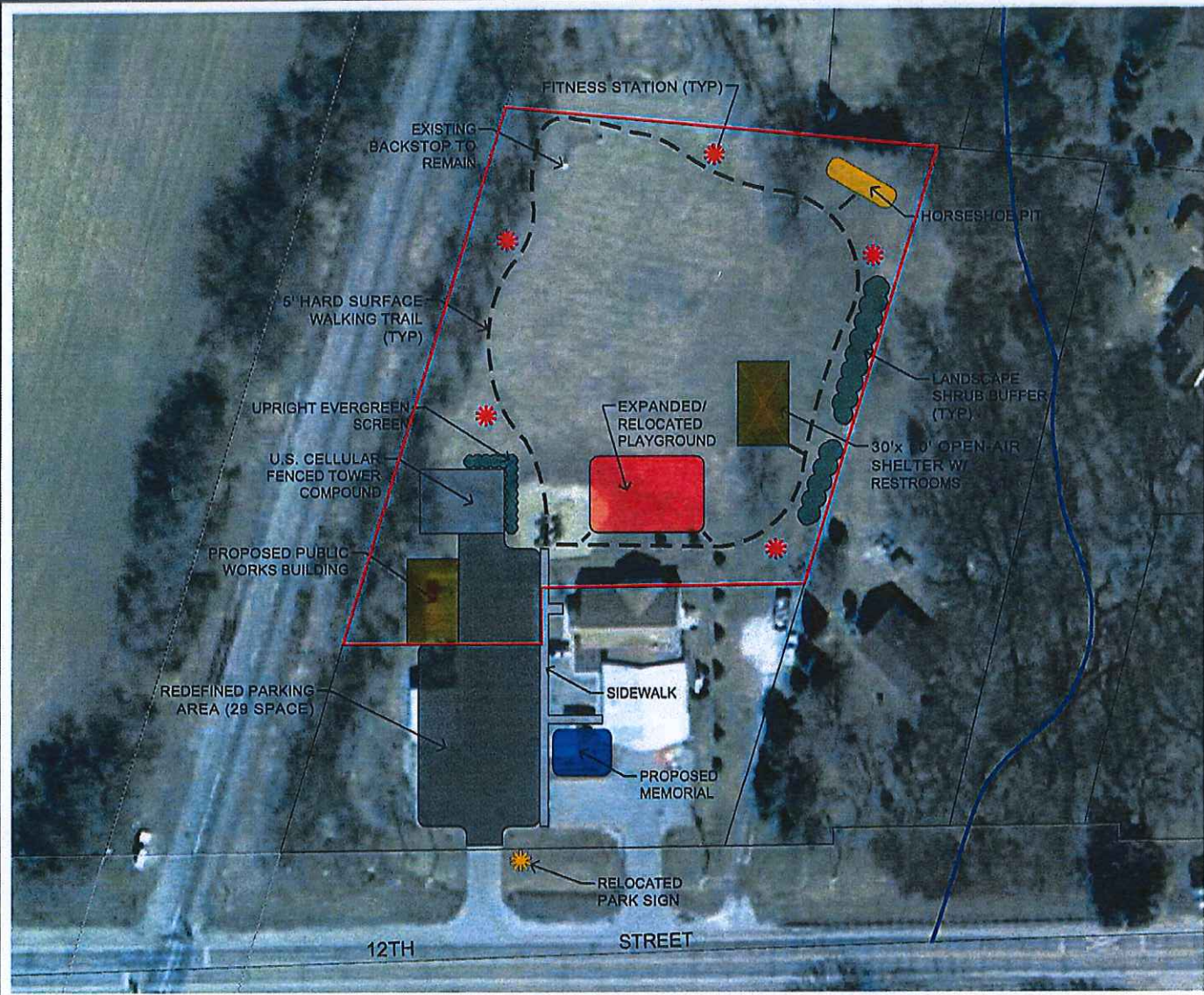
DATE: OCTOBER, 2009
© 2009 Copyright Ruekert & Mielke, Inc.

SOURCE: RUEKERT-MIELKE
BASEMAP SOURCE: KENOSHA COUNTY PLANNING AND DEVELOPMENT



RM117LB

Oct 15, 2009 3:31pm, PLOTTED BY CALDWAY, SAVED BY CALDWAY
D:\2009\10\05\New_Zones\Fabiano Park.dwg, Layout 1
SCALE: 1"=30'-0" (1:360) (ANSI) 11/16/2009 10:48:58 AM
MPLS, O:\Landscape\2009\2009022009022009.dwg



FABIANO PARK CONCEPT PLAN

TOWN OF SOMERS
KENOSHA COUNTY, WISCONSIN

LEGEND

— PROPERTY BOUNDARY



SCALE IN FEET

DATE: OCTOBER, 2009

© 2009 Copyright Ruckert & Mielke, Inc.

SOURCE: RUEKERT-MIELKE
BASEMAP SOURCE: KENOSHA COUNTY PLANNING AND DEVELOPMENT








**1.65-ACRE PARK CONCEPT PLAN
VALLEY VIEW SUBDIVISION**

TOWN OF SOMERS
KENOSHA COUNTY, WISCONSIN

LEGEND

-  PROPERTY BOUNDARY
-  SHADE TREE
-  EVERGREEN TREE



SCALE IN FEET

DATE: OCTOBER, 2009

© 2009 Copyright Ruekert & Mielke, Inc.

Ruekert-Mielke
engineering solutions for a working world



041.19.2009 3.28pm PLOTTED BY: COLGONORSO SAVED BY: COLGONORSO
C:\2009\10202\Map\Zoning\1.65 Acre Park.dwg Layered
MEELE O:\land\102020\102020.dwg 25/10/2009 3:28:00 PM

SOURCE: RUEKERT-MIELKE
BASEMAP SOURCE: KENOSHA COUNTY PLANNING AND DEVELOPMENT

RM111715

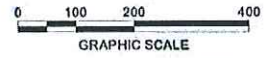


**34.70-ACRE PARK ON C.T.H EA
CONCEPT PLAN**

TOWN OF SOMERS
KENOSHA COUNTY, WISCONSIN

LEGEND

— PROPERTY BOUNDARY



DATE: OCTOBER, 2009

© 2009 Copyright Ruekert & Mielke, Inc.



Oct 15, 2009 3:28pm PLANNED BY: C:\CADD\DWG\04_000000\04_000000.dwg PLOTTED BY: C:\CADD\DWG\04_000000\04_000000.dwg
 D:\CADD\DWG\04_000000\04_000000.dwg PLOT DATE: 10/15/09 3:28 PM PLOT SCALE: 1:1
 WASTE: R:\CADD\DWG\04_000000\04_000000.dwg C:\12_2002_1.dwg D:\CADD\DWG\04_000000\04_000000.dwg
 PLOT: C:\CADD\DWG\04_000000\04_000000.dwg

SOURCE: RUEKERT-MIELKE
BASEMAP SOURCE: KENOSHA COUNTY PLANNING AND DEVELOPMENT




RM1117LB



**COUNTRY CHARM SUBDIVISION PARK
CONCEPT PLAN**

TOWN OF SOMERS
KENOSHA COUNTY, WISCONSIN

LEGEND

-  PROPERTY BOUNDARY
-  SHADE TREE
-  EVERGREEN TREE



SCALE IN FEET

DATE: OCTOBER, 2009

© 2009 Copyright Ruckert & Mielke, Inc.



Dec 15, 2009 5:16pm RUCKERT & MIELKE, INC. 1000 N. WISCONSIN AVE. SUITE 100
 KENOSHA, WI 53141-1000
 TEL: 920.393.1000 FAX: 920.393.1001
 WWW.RM-INC.COM

SOURCE: RUEKERT-MIELKE
BASEMAP SOURCE: KENOSHA COUNTY PLANNING AND DEVELOPMENT