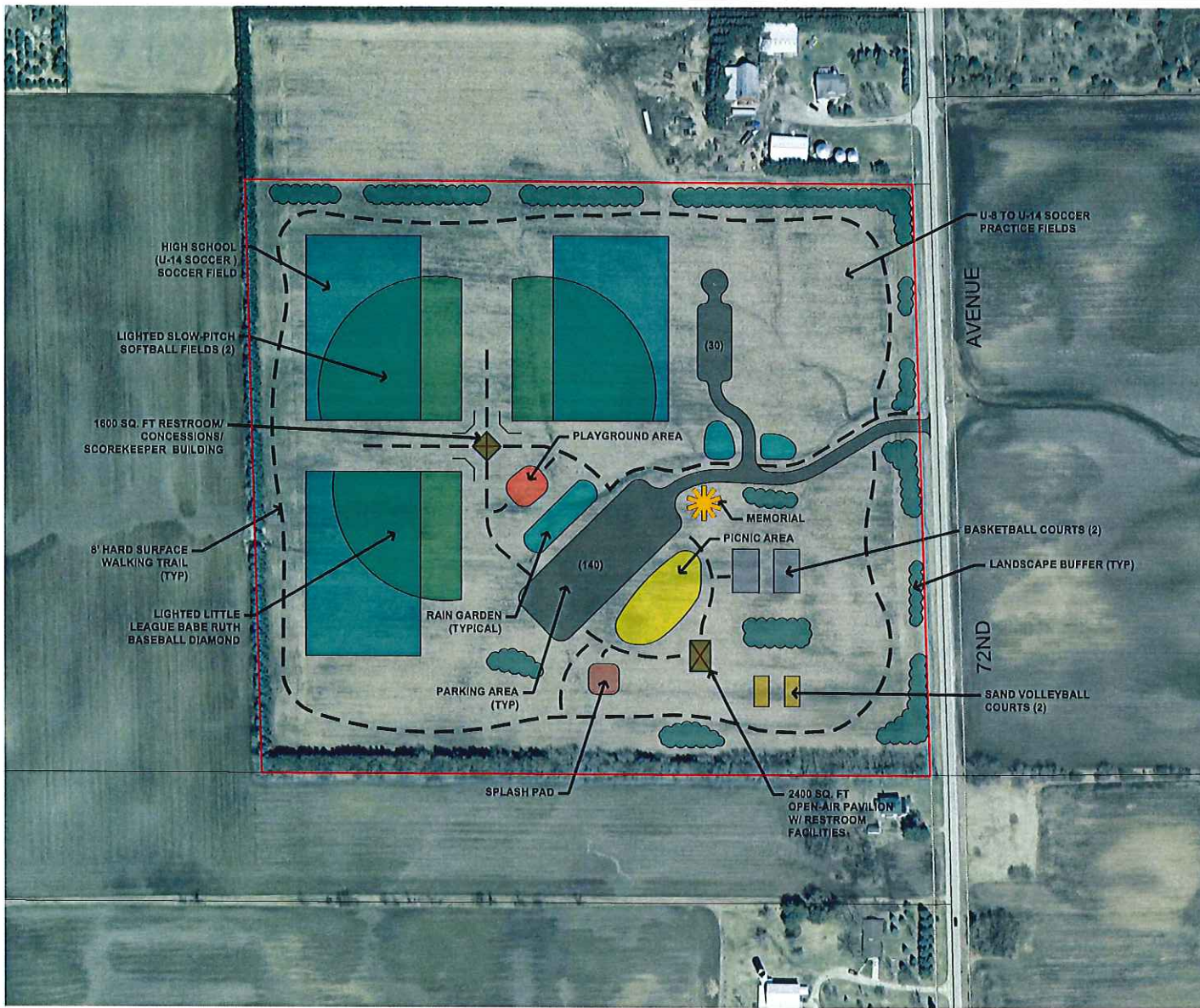


RM1171LB

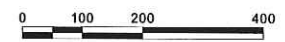


**34.70-ACRE PARK ON C.T.H EA  
CONCEPT PLAN**

TOWN OF SOMERS  
KENOSHA COUNTY, WISCONSIN

**LEGEND**

— PROPERTY BOUNDARY



GRAPHIC SCALE

DATE: OCTOBER, 2009

© 2009 Copyright Ruekert & Mielke, Inc.



Oct 19, 2009 3:35pm PLOTTED BY: CALOSKOWSKI SAVED BY: CALOSKOWSKI  
 IMAGE: \\NAZAR\work\proj\340208\img\CP\_12\_0227.dwg: 613371VIEW\_1.dwg: 613371VIEW\_1.dwg: 613371VIEW\_1.dwg  
 WREFS: C:\na\work\122008\proj\340208\img\CP\_12\_0227.dwg: 613371VIEW\_1.dwg: 613371VIEW\_1.dwg: 613371VIEW\_1.dwg

SOURCE: RUEKERT-MIELKE  
BASEMAP SOURCE: KENOSHA COUNTY PLANNING AND DEVELOPMENT