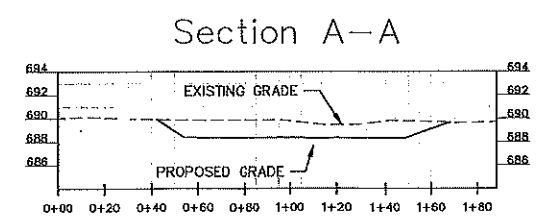
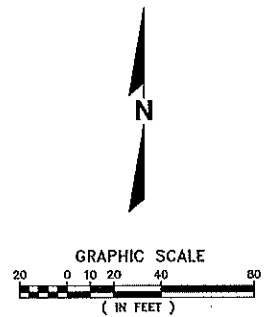
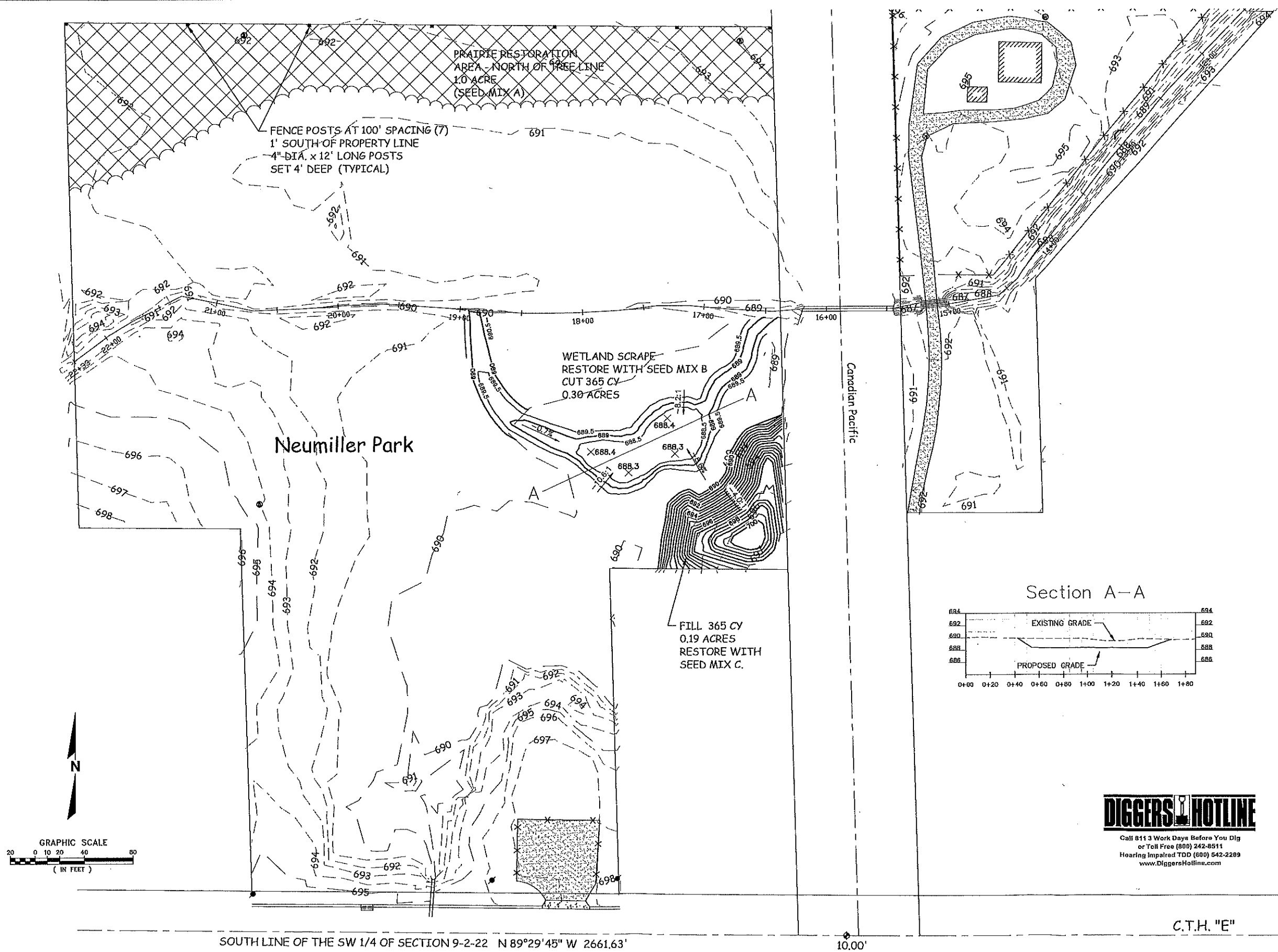


\\rasmith.com\brookfield\Municipal\1130231\11302310.dwg, Neumiller, 12/26/2017 12:35:15 PM, ger



DIGGERS HOTLINE
 Call 811 3 Work Days Before You Dig
 or Toll Free (800) 242-8511
 Hoarding Impaired TOD (800) 542-2289
 www.DiggersHotline.com

R.A. Smith National <i>Beyond Surveying and Engineering</i> 15745 W. Bluemound Road, Brookfield, WI 53005-5938 262-791-1000 Fax 262-791-0465, www.rasmithnational.com Appleton, WI Orange County, CA Pittsburgh, PA		DESCRIPTION	REVISED WETLAND SCRAPE DEPTH & FILL SITE
		DATE	12/26/17
TOWN OF SOMERS KENOSHA COUNTY, WISCONSIN NEUMILLER PARK WETLAND SCRAPE		SHEET NUMBER 1	

SOUTH LINE OF THE SW 1/4 OF SECTION 9-2-22 N 89°29'45" W 2661.63'

C.T.H. "E"